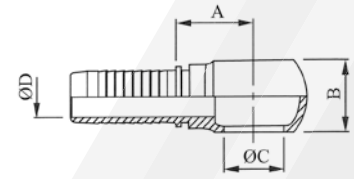
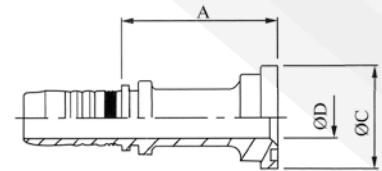


**STRAIGHT BANJO  
FOR METRIC BANJO BOLT  
AS PER IS:3172**



Reference No.	Pipe Size	Hose Size	Dimensions in mm		
	ØC	Inch	A	B	ØD
BJ08101-03-03	10.0	3/16	25.0	10.0	3.0
BJ08101-03-04	10.0	1/4	23.0	10.0	3.0
BJ08101-04-04	12.0	1/4	26.5	12.0	4.0
BJ08101-05-04	14.0	1/4	27.0	14.0	4.0
BJ08101-04-05	12.0	5/16	27.0	12.0	5.0
BJ08101-05-05	14.0	5/16	27.0	14.0	5.0
BJ08101-06-05	16.0	5/16	30.0	16.0	5.0
BJ08101-05-06	14.0	3/8	27.0	14.0	7.0
BJ08101-06-06	16.0	3/8	29.0	16.0	7.0
BJ08101-08-06	18.0	3/8	28.0	20.0	7.0
BJ08101-06-08	16.0	1/2	30.0	16.0	7.0
BJ08101-08-08	18.0	1/2	34.0	20.0	9.0
BJ08101-10-10	22.0	5/8	36.5	25.0	12.0
BJ08101-12-12	26.0	3/4	43.0	30.0	15.0
BJ08101-16-12	30.0	3/4	46.0	36.0	15.0
BJ08101-12-16	26.0	1	41.0	30.0	15.0
BJ08101-16-16	30.0	1	47.0	36.0	19.0

**STRAIGHT SAE FLANGE SHOULDER  
STANDARD PRESSURE SERIES  
CODE 61 (3000 PSI)**



Reference No.	Flange Size	Hose Size	Dimensions in mm		
	Inch	Inch	A	ØD	ØC
FL08201-08-08	1/2	1/2	52.0	9.0	30.2
FL08201-12-10	3/4	5/8	48.0	12.0	38.1
FL08201-12-12	3/4	3/4	51.5	15.0	38.1
FL08201-16-12	1	3/4	51.5	15.0	44.4
FL08201-20-12	1.1/4	3/4	62.0	15.0	50.8
FL08201-16-12	1	1	64.0	19.0	44.4
FL08201-20-16	1.1/4	1	62.0	19.0	50.8
FL08201-24-16	1.1/2	1	64.0	19.0	60.3
FL08201-20-20	1.1/4	1.1/4	58.0	26.0	50.8
FL08201-24-20	1.1/2	1.1/4	60.0	26.0	60.3
FL08201-32-20	2	1.1/4	82.0	26.0	71.4
FL08201-20-24	1.1/4	1.1/2	64.0	26.0	50.8
FL08201-24-24	1.1/2	1.1/2	58.0	32.0	60.3
FL08201-32-24	2	1.1/2	82.0	32.0	71.4
FL08201-32-32	2	2	62.0	42.0	71.4
FL08201-40-32	2.1/2	2	64.0	42.0	84.1